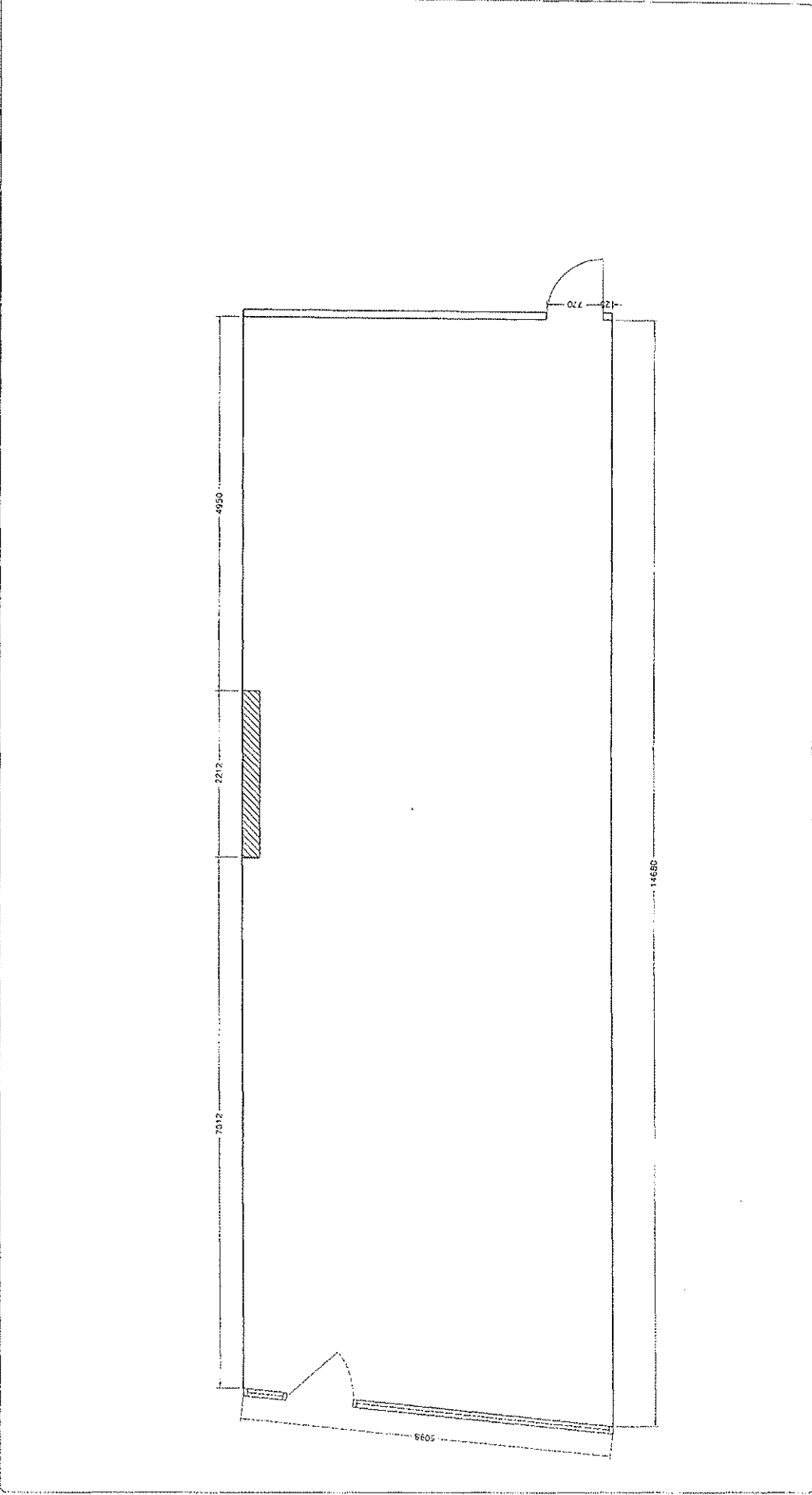


- FIRE LEGEND
- ☒ Fire extinguisher - H<sub>2</sub>O
  - ☒ Fire extinguisher - CO<sub>2</sub>
  - ☒ Fire extinguisher - FOAM
  - Call point
  - ☒ Sounder



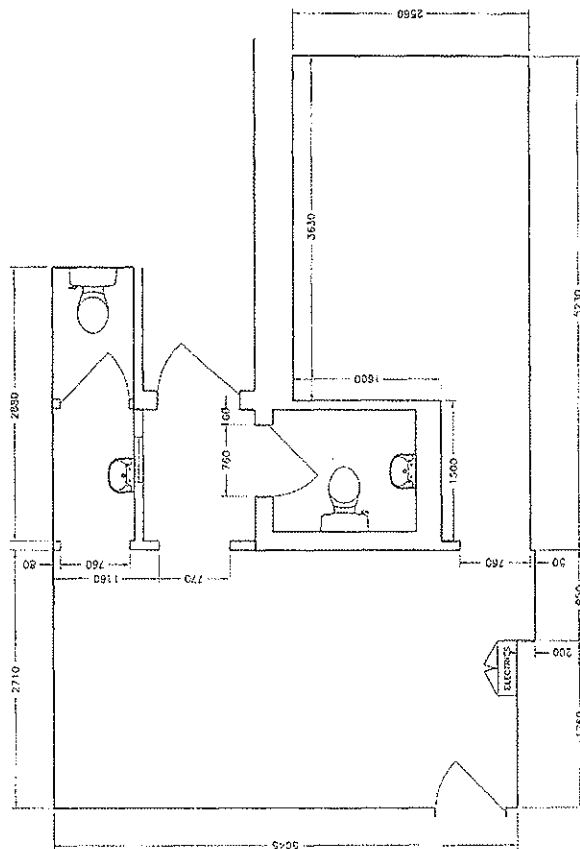
Planet SHOPFITTING

Unit 7 Midland Court,  
Barborough Links,  
Cheslerfield, S43 4UL  
TEL: 01246 573060  
FAX: 01246 573070

The Moneyshop, Castlebridge Office  
Village, Kirtley Drive, Castle Marina,  
Nottingham, NG7 1LD

|       |                            |                             |                 |
|-------|----------------------------|-----------------------------|-----------------|
| Shop  | Lewisham                   | Address                     | 112 High Street |
| Title | Existing Ground Floor C.A. | Scale                       | 1:50            |
| Drawn | DBF                        | Date                        | 01.08.06        |
|       |                            | Rev.                        |                 |
|       |                            | Size                        | A3              |
|       |                            | DO NOT SCALE FROM THIS DWG. |                 |

- FIRE LEGEND
- ☒ Fire extinguisher - H<sub>2</sub>O
  - ☒ Fire extinguisher - CO<sub>2</sub>
  - ☒ Fire extinguisher - FOAM
  - ⊙ Call point
  - ☒ Sounder



Planet  
SHOP FITTING

Unit 7 Midland Court,  
Barborough Links,  
Chesterfield, S43 4UL  
TEL: 01246 573086  
FAX: 01246 573079

The Money Shop, Castlebridge Office  
Village, Kirtley Drive, Castle Marina,  
Nottingham, NG7 1LD

Money Shop

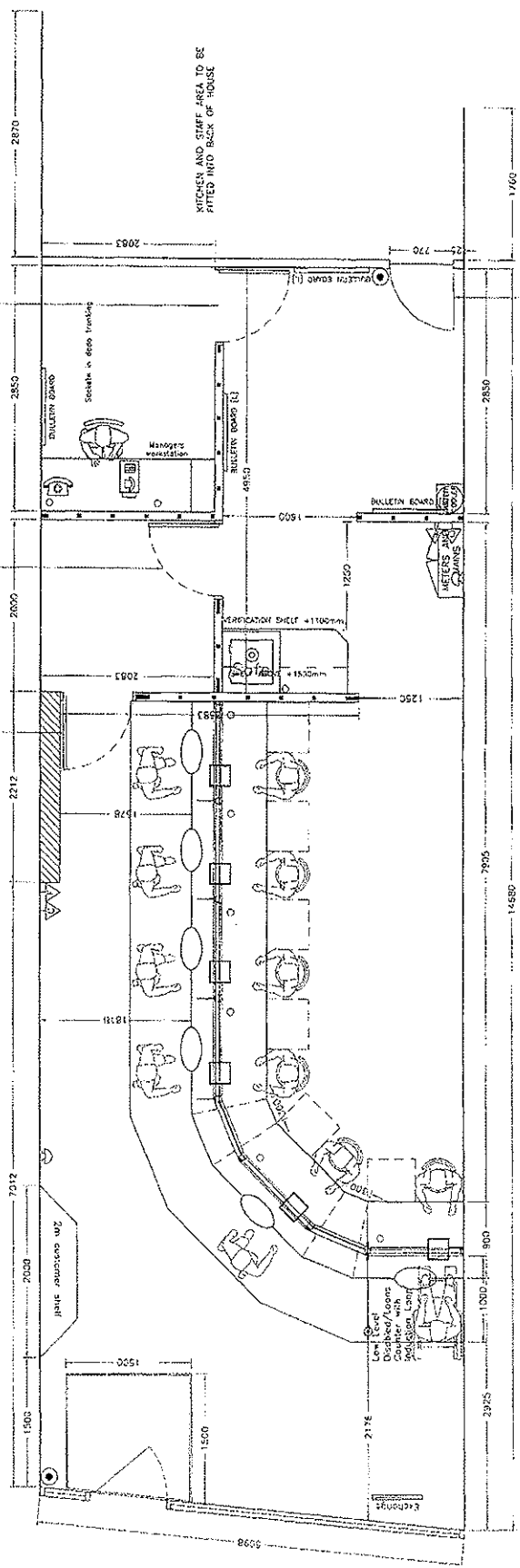
|       |                         |                             |                 |
|-------|-------------------------|-----------------------------|-----------------|
| Shop  | Lewisham                | Address                     | 112 High Street |
| Title | Existing Rear Area C.A. | Scale                       | 1:50            |
| Drawn | DBF                     | Date                        | 01.08.06        |
|       |                         | Rev.                        | -               |
|       |                         | Size                        | A3              |
|       |                         | DO NOT SCALE FROM THIS DWG. |                 |

- FIRE LEGEND**
- ☒ Fire extinguisher - H<sub>2</sub>O
  - ☒ Fire extinguisher - CO<sub>2</sub>
  - ☒ Fire extinguisher - FOAM
  - ☒ Call point
  - ☒ Sounder

- MANAGER / SUPERVISOR DOOR**
- WHITE PAINTED DOOR WITH:  
 1 No. MACLOCK  
 3 No. HINGES  
 1 No. DOOR CLOSER  
 1 No. SPRING  
 1 No. SPRING  
 2 No. D-HANDLES  
 2 No. 0-HANDLES

- GREY PAINTED DOOR WITH:**
- 1 No. MACLOCK  
 3 No. HINGES  
 1 No. DOOR CLOSER  
 1 No. SPRING  
 1 No. SPRING  
 2 No. D-HANDLES  
 2 No. 0-HANDLES

- MANTRAP DOOR 1**
- CHERRY PAINTED DOOR WITH:  
 1 No. MACLOCK  
 3 No. HINGES  
 1 No. DOOR CLOSER  
 1 No. SPRING  
 1 No. SPRING  
 2 No. D-HANDLES  
 2 No. 0-HANDLES



|                 |      |           |      |
|-----------------|------|-----------|------|
| Dept.           | Name | Signature | Date |
| Marketing       |      |           |      |
| Operations      |      |           |      |
| IT              |      |           |      |
| Security        |      |           |      |
| Final approval: |      |           |      |

|       |                            |                             |                 |
|-------|----------------------------|-----------------------------|-----------------|
| Shop  | Lewisham                   | Address                     | 112 High Street |
| Title | Proposed Ground Floor G.A. | Scale                       | 1:50            |
| Drawn | DBF                        | Date                        | 02.08.06        |
|       |                            | Rev.                        | A               |
|       |                            | Size                        | A3              |
|       |                            | DO NOT SCALE FROM THIS DWG. |                 |

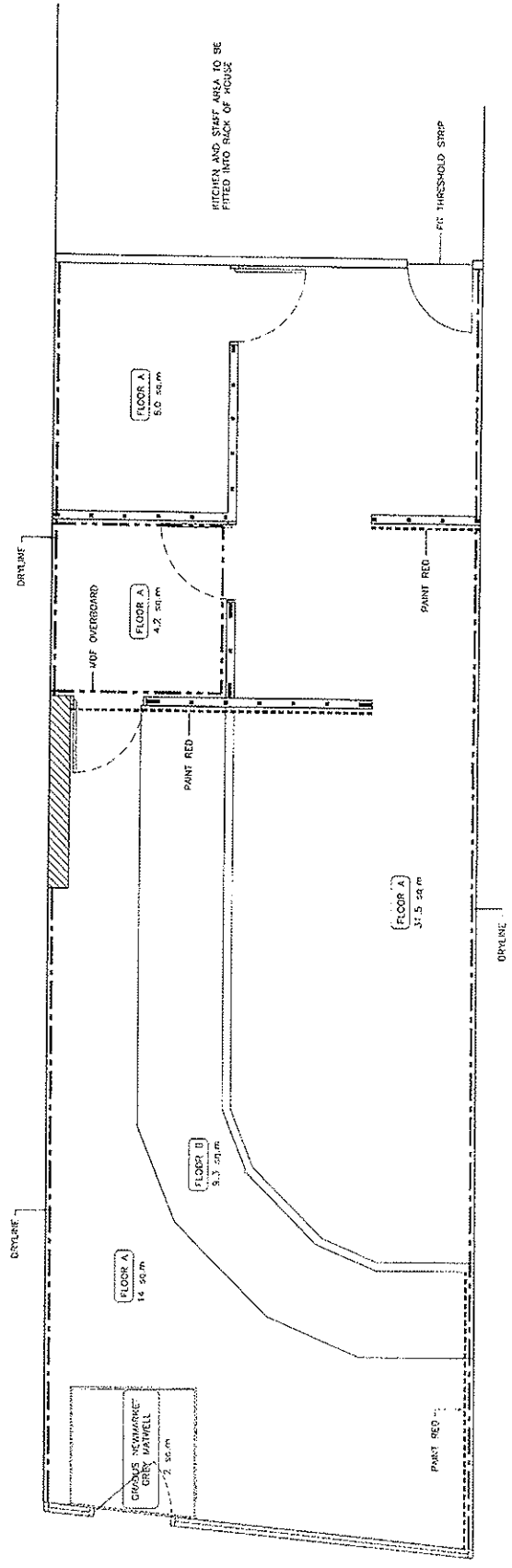
**Planet SHOPFITTING**

The Moneyshop, Castlebridge Office  
 Village, Kirtley Drive, Castle Marina,  
 Nottingham, NG7 1LD

Unit 7 Midland Court,  
 Barborough Lane,  
 Chesterfield, S43 4JL  
 TEL: 01246 573050  
 FAX: 01246 573070

**FINISHES LEGEND**

- - - - - INDICATES WALL PAINTED RED (DULUX VINYL MAT 66R 09/100)
- - - - - INDICATES LOCATION OF SPEEDLINE STONE WALLING
- - - - - INDICATES LOCATION OF PLASTERBOARD SKIRTING
- - - - - INDICATES LOCATION OF 750mm VCP OVERBOARDING
- - - - - ALL WALLS TO BE PAINTED DARK GREY UNLESS OTHERWISE STATED



**FLOORING KEY:**  
 FLOOR A - STRATUS FURN 04503 CARPET  
 FLOOR B - STRATUS FIREBRICK 04502 CARPET

|                             |                                |         |                 |
|-----------------------------|--------------------------------|---------|-----------------|
| Shop                        | Lewisham                       | Address | 112 High Street |
| Title                       | Proposed Ground Floor Finishes | Scale   | 1:50            |
| Size                        | A3                             | Rev.    | A               |
| Drawn                       | DBF                            | Date    | 02.08.06        |
| DO NOT SCALE FROM THIS DWG. |                                |         |                 |

**Planet SHOPFITTING**

The Moneyshop, Castlebridge Office  
 Village, Kirtley Drive, Castic Marina,  
 Nottingham, NG7 1LD

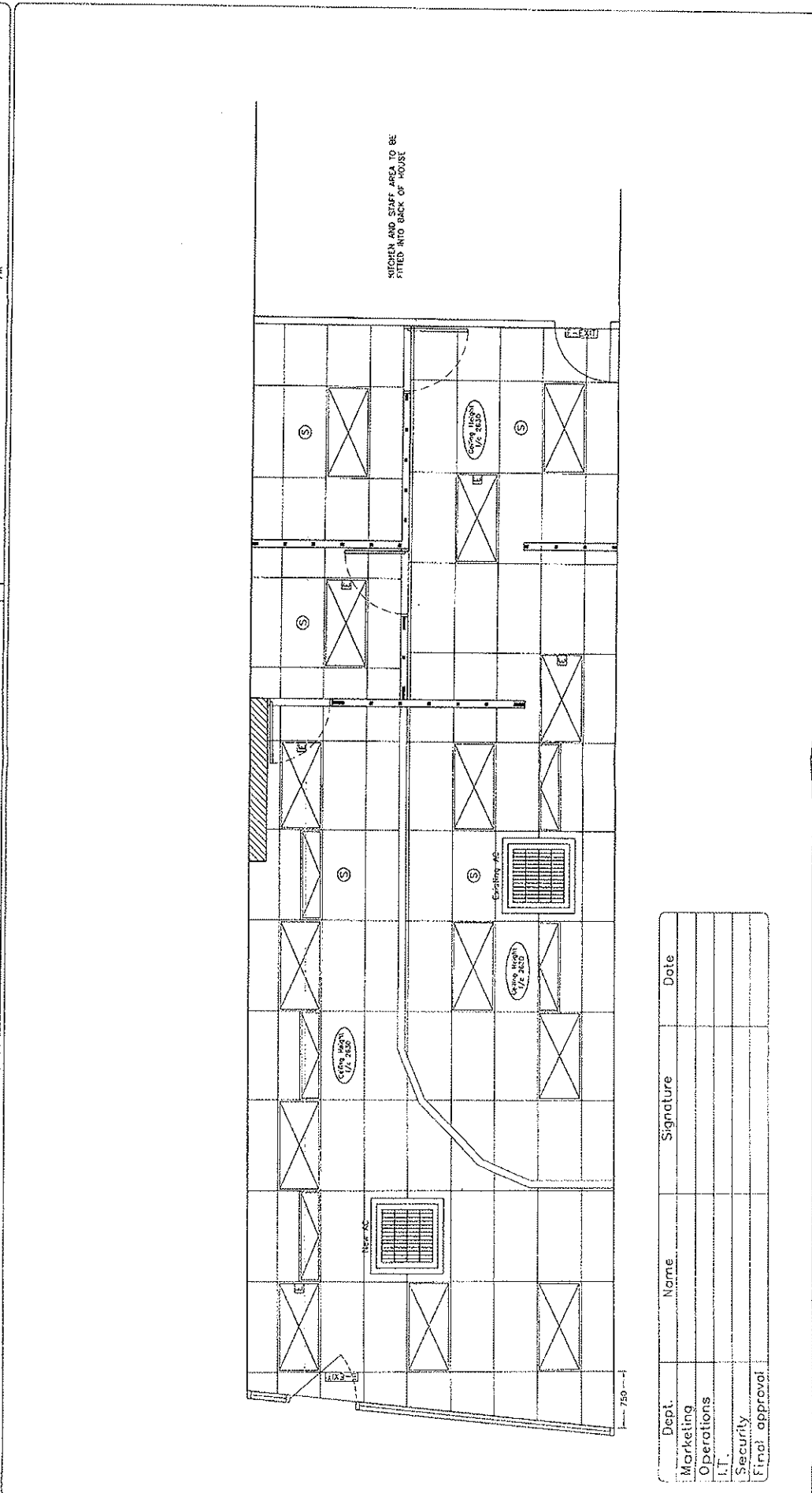
Unit 7 Midland Court,  
 Barborough Links,  
 Chesterfield, S43 4UL  
 TEL: 01246 573060  
 FAX: 01246 573070

**LIGHT LEGEND**

|  |                                   |  |                                     |  |                               |
|--|-----------------------------------|--|-------------------------------------|--|-------------------------------|
|  | square luminaire - 600x600 grid   |  | Specified length single fluorescent |  | Lightbulb                     |
|  | square luminaire - 600x1200 grid  |  | Specified length twin fluorescent   |  | Downlighter                   |
|  | Circular luminaire - 600x600 grid |  | Wall mounted luminaire              |  | Directional downlighter circ. |
|  | Wallwash - 600x600 grid           |  | Illuminated emergency exit sign     |  | Low voltage Spotlight         |
|  | Wallwash - 1200x600 grid          |  | Emergency light                     |  |                               |

|  |                            |  |                                 |  |                          |
|--|----------------------------|--|---------------------------------|--|--------------------------|
|  | Call point                 |  | Smoke sensor                    |  | Hose reel                |
|  | Sounder                    |  | Heat sensor                     |  | Fire extinguisher - H2O  |
|  | Speaker                    |  | Sprinkler head                  |  | Fire extinguisher - CO2  |
|  | CCTV camera                |  | Smoke cloak                     |  | Fire extinguisher - FOAM |
|  | Passive infra red detector |  | 360° Passive infra red detector |  |                          |

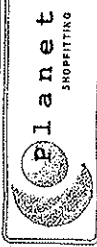


| Dept.          | Name | Signature | Date |
|----------------|------|-----------|------|
| Marketing      |      |           |      |
| Operations     |      |           |      |
| IT             |      |           |      |
| Security       |      |           |      |
| Final approval |      |           |      |

|       |                               |                             |                 |
|-------|-------------------------------|-----------------------------|-----------------|
| Shop  | Lewisham                      | Address                     | 112 High Street |
| Title | Proposed Ground Floor Ceiling | Scale                       | 1:50            |
| Drawn | DBF                           | Date                        | 02.08.06        |
|       |                               | Rev.                        | A               |
|       |                               | Size                        | A3              |
|       |                               | DO NOT SCALE FROM THIS DWG. |                 |



The Moneyshop, Castlebridge Office  
 Village, Kirtley Drive, Caste Marina,  
 Nottingham, NG7 1LD



Unit 7 Midland Court,  
 Barborough Links,  
 Chesterfield, S43 4JL  
 TEL: 01246 573060  
 FAX: 01246 573070

**ELECTRIC LEGEND**

- Single unswitched socket outlet
- Single switched socket outlet
- Twin unswitched socket outlet
- Twin switched socket outlet
- Fused spur

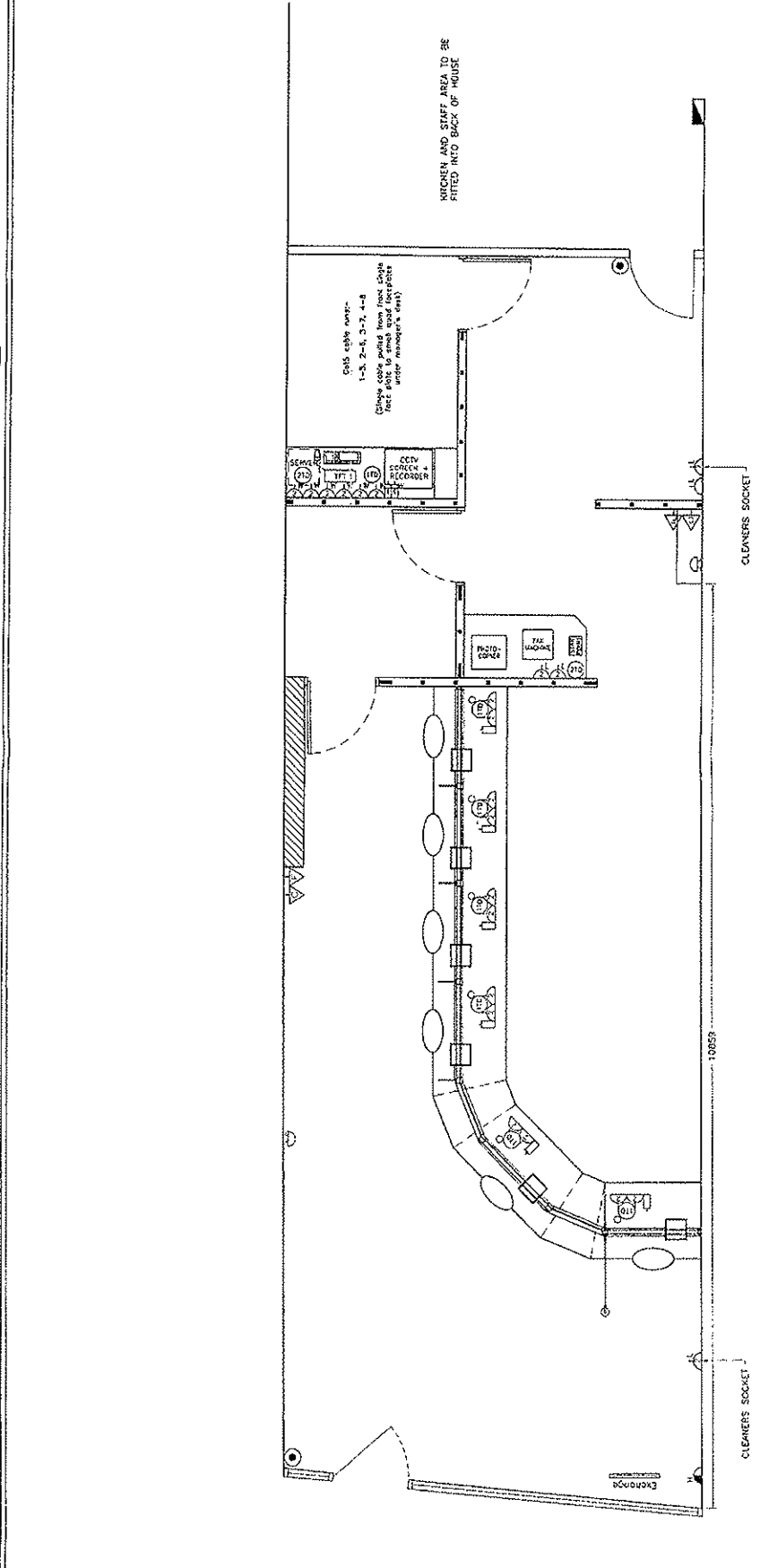
- Recessed socket
- Socket w/ mounting height:
- F = Floor recessed
- L = Low level +300 AFFL
- M = Mid level +1200 AFFL
- W = Above Worktop +150mm
- H = High level +2200 AFFL
- V = Ceiling Void

- Twin CATS Data outlet
- Quad CATS Data outlet
- Single phone point
- Double Phone point
- Typical light switch

- Phone
- Panic button
- Local distribution board
- Air Con. - Control panel
- Fire alarm panel

- Security Panel
- Ticket display unit
- Breacking glass detector
- Keyswitch
- Cell enhancer

- DL
- KP
- MC
- OA



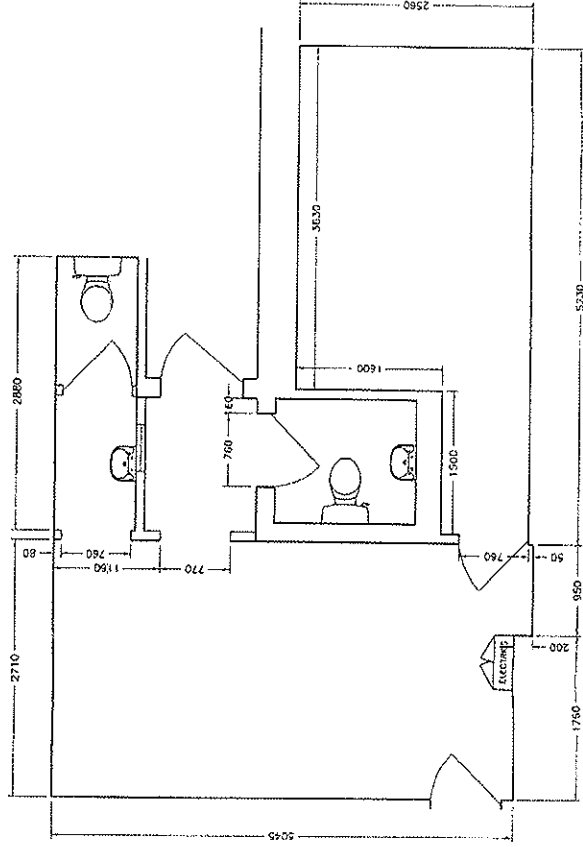
| Dept.          | Name | Signature | Date |
|----------------|------|-----------|------|
| Marketing      |      |           |      |
| Operations     |      |           |      |
| LT             |      |           |      |
| Security       |      |           |      |
| Final approval |      |           |      |

|       |                                 |                             |                 |
|-------|---------------------------------|-----------------------------|-----------------|
| Shop  | Lewisham                        | Address                     | 112 High Street |
| Title | Proposed Ground Floor Electrics | Scale                       | 1:50            |
| Drawn | DBF                             | Date                        | 02.08.06        |
|       |                                 | Rev.                        | A               |
|       |                                 | Size                        | A3              |
|       |                                 | DO NOT SCALE FROM THIS DWG. |                 |

**Money Shop**  
 The Moneyshop, Castlebridge Office  
 Villages, Kirtley Drive, Castle Marina,  
 Nottingham, NG7 1LD

**Planet SHOPFITTING**  
 Unit 7 Midland Court  
 Scarborough Links,  
 Chesterfield, S43 1UL  
 TEL: 01246 573060  
 FAX: 01246 573070

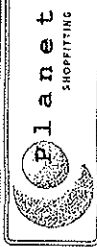
- FIRE LEGEND
- Fire extinguisher - H<sub>2</sub>O
  - Fire extinguisher - CO<sub>2</sub>
  - Fire extinguisher - FOAM
  - Call point
  - Sounder



| Dept.           | Name | Signature | Date |
|-----------------|------|-----------|------|
| Marketing       |      |           |      |
| Operations      |      |           |      |
| I.T.            |      |           |      |
| Security        |      |           |      |
| Final approval: |      |           |      |

|       |                         |                             |                 |
|-------|-------------------------|-----------------------------|-----------------|
| Shop  | Lewisham                | Address                     | 112 High Street |
| Title | Proposed Rear Area G.A. | Scale                       | 1:50            |
| Drawn | DBF                     | Date                        | 02.08.06        |
|       |                         | Rev.                        | A               |
|       |                         | Size                        | A3              |
|       |                         | DO NOT SCALE FROM THIS DWG. |                 |

The Moneyshop, Castlebridge Office  
 Village, Kirtley Drive, Castle Marina,  
 Nottingham, NG7 1LD



Unit 7 Midland Court,  
 Barborough Links,  
 Chesterfield, S43 4UL  
 TEL: 01246 573060  
 FAX: 01246 573070